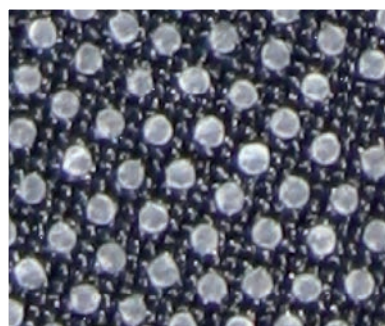




Jowat
GREEN ADHESIVES



Jowatherm-Reaktant[®] 638.20



ECO PASSPORT by OEKO-TEX[®]

Good adhesion to a wide range of different membranes and textiles

Soft to the touch

Very good resistance to washing

Good processing characteristics on rollers

Low processing temperature



Jowatherm-Reaktant® 638.20 is gentle on the substrate due to low processing temperatures and does not expose the substrate to high heat. In addition, the adhesive does not require high temperatures for melting and application and thereby saves energy in processing. Good processing characteristics on roller applicators facilitate high feed speeds.

The wide variety of substrate combinations can be a challenging task for adhesives. **Jowatherm-Reaktant® 638.20** is a true “all-rounder” with good adhesion to a broad spectrum of membranes as well as to different textiles (this

requires prior verification by testing).

A soft textile feel is one of the main factors playing a role in the purchase decision of consumers. Therefore, it is important that the adhesive should not have a negative effect on how the fabric feels. **Jowatherm-Reaktant® 638.20** is a product which has a very soft feel to it but is also very stretchable. This is required for flexible substrates. The good wash resistance of **Jowatherm-Reaktant® 638.20** is essential for the durability of textiles. In addition, the adhesive also fulfils the strict requirements for the ECO PASS-PORT by OEKO-TEX®.

Jowatherm-Reaktant® 638.20

Lamination adhesive for bonding textiles and breathable membranes.

Polymer basis		polyurethane
Processing temperature	[°C]	90 - 110
Density at 20 °C	[°C]	1.2 ± 0.05
Viscosity at 100 °C	[mPas]	5,500 ± 1,500
Appearance		colorless



The information given in this leaflet is based on test results from our laboratories as well as on experience gained in the field, and does in no way constitute any guarantee of properties. Due to the wide range of different applications, substrates, and processing methods beyond our control, no liability may be derived from these indications nor from the information provided by our free technical advisory service. Before processing, please request the corresponding data sheet and observe the information in it! Customer trials under everyday conditions, testing for suitability at normal processing conditions, and appropriate fit-for-purpose testing are absolutely necessary. For the specifications as well as further information, please refer to the latest technical data sheets.