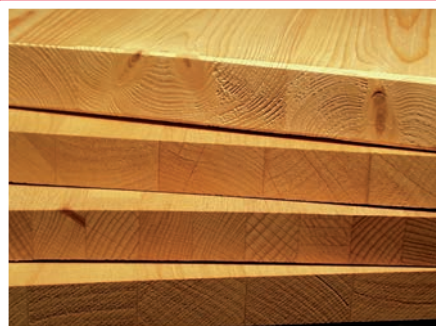




Jowacoll® 102.26



Multi-purpose PVAc D4 adhesive for increased requirements in interior and outside applications

High resistance to water and temperature

Easy to process

Certified for the manufacture of window frame scantlings

Jowacoll® 102.26 is a two-component multi-purpose adhesive for bonding hard and soft wood species as well as for fingerjointing and for the manufacturing of window frame scantlings. The dispersion must be mixed with 5 wt% of the hardener **Jowat® 195.35** before processing to meet durability class D4 according to EN 204/205. It attains tensile shear strengths of >7 N/mm² pursuant to DIN EN 14257 (WATT '91), which facilitates the laminating of window frame scantlings in line with the applicable guidelines by the ift. Rosenheim.

The easy processing and broad range of application are widely appreciated benefits of this PVAc dispersion.

Jowacoll® 102.26 can be applied by roller or nozzle in mass production as well as by hand in manual processes.

Jowacoll® 102.26 has been a highly valued product for many decades, particularly for the laminating of window scantlings and in fingerjointing applications. Significantly reduced pressing times, especially when high-frequency presses are being used, facilitate high process efficiency.

Jowacoll® 102.26 demonstrates the powerful range of dispersion adhesives supplied by Jowat, made possible also by the in-house polymerization of vinyl acetate (VAM): optimally tailored products of consistently high quality.



Jowacoll® 102.26

D4 dispersion with high water resistance. Multi-purpose adhesive for bonding hard and soft wood species as well as for the manufacture of window frame scantlings and fingerjointing.

Base polymer		polyvinyl acetate (PVAc)
Classification according to EN 204		D4 after addition of 5 wt% Jowat® 195.35
DIN EN 14257 (WATT '91)		> 7 N/mm ²
Viscosity at 20 °C	[mPas]	7,000 ± 500
Open assembly time at 20 °C	[min]	8 ± 2
Minimum pressing time	[min]	20 °C: 30 minutes

* The data indicated above was determined at 6 – 10 % wood moisture following EN 204/205 (20 °C / 65 % RH), with a glue application of approx. 150 g/m².

The information given in this leaflet is based on test results from our laboratories as well as on experience gained in the field, and does in no way constitute any guarantee of properties. Due to the wide range of different applications, substrates, and processing methods beyond our control, no liability may be derived from these indications nor from the information provided by our free technical advisory service. Before processing, please request the corresponding data sheet and observe the information in it! Customer trials under everyday conditions, testing for suitability at normal processing conditions, and appropriate fit-for-purpose testing are absolutely necessary. For the specifications as well as further information, please refer to the latest technical data sheets.